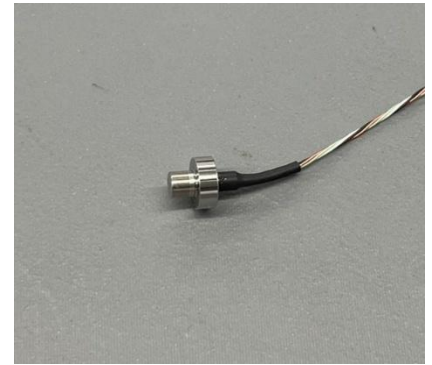
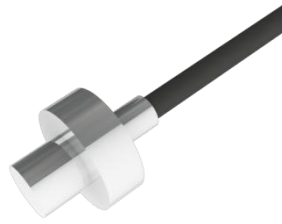


PPB-Series

Miniature Pressure Sensor

Ref : 301

Rev : H



DESCRIPTION

These miniature pressure sensors are designed to make static measurements of pressure as well as dynamic in corrosive condition. Realized entirely with stainless steel, these levelling membrane sensors are compatible with a great number of corrosive or conducting fluids.

MEASURING RANGES

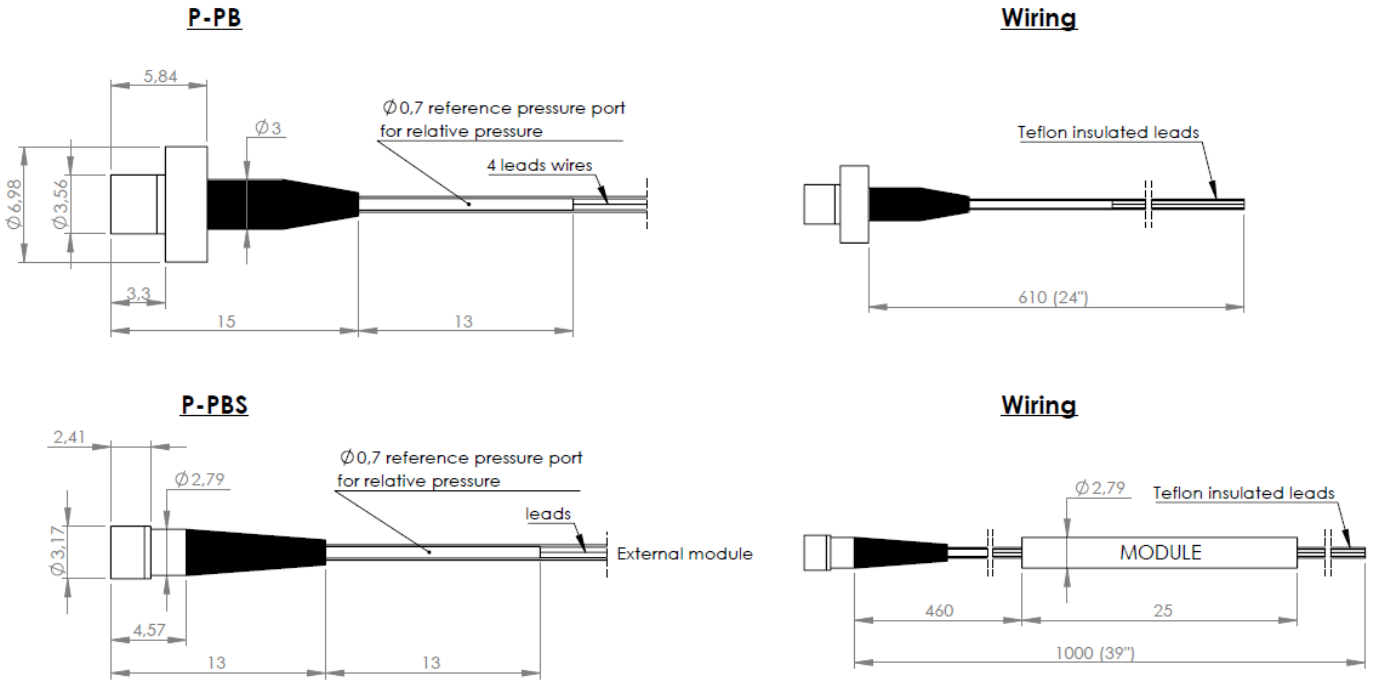
PRESSURE RANGES (FS in PSI)	PRESSURE RANGES (FS in BAR)	Pressure limit	RESONANT FREQUENCY	OUTPUT FS / 5V (multiplied by 2 / 10V)	Non Linearity & Hysteresis (%FS)	THERMAL ZERO SHIFT / 50°C (TZS)
5	0.3	10 x FS	55 KHz	11 mV ± 4 mV	± 1%	± 2 mV
10	0.7	5 x FS	55 KHz	22 mV ± 8 mV	± 1%	± 2 mV
15	1	3.5 x FS	55 KHz	33 mV ± 8 mV	± 1%	± 2 mV
25	1.7	2 x FS	55 KHz	55 mV ± 8 mV	± 1%	± 2 mV
50	3.5	2 x FS	60 KHz	60 mV ± 8 mV	± 1%	± 2 mV
100	7	2 x FS	70 KHz	68.75 mV ± 8 mV	±0.75%	± 1.5% FSO
250	17	2 x FS	100 KHz	68.75 mV ± 8 mV	±0.5%	± 1.5% FSO
500	35	2 x FS	150 KHz	68.75 mV ± 8 mV	±0.5%	± 1.5% FSO
1 000	70	2 x FS	200 KHz	68.75 mV ± 8 mV	±0.5%	± 1.5% FSO
2 000	140	2 x FS	250 KHz	68.75 mV ± 8 mV	±0.5%	± 1.5% FSO
2 500	170	2 x FS	300 KHz	68.75 mV ± 8 mV	±0.5%	± 1.5% FSO
5 000	350	2 x FS	450 KHz	68.75 mV ± 8 mV	±0.5%	± 1.5% FSO

TECHNICAL DATA

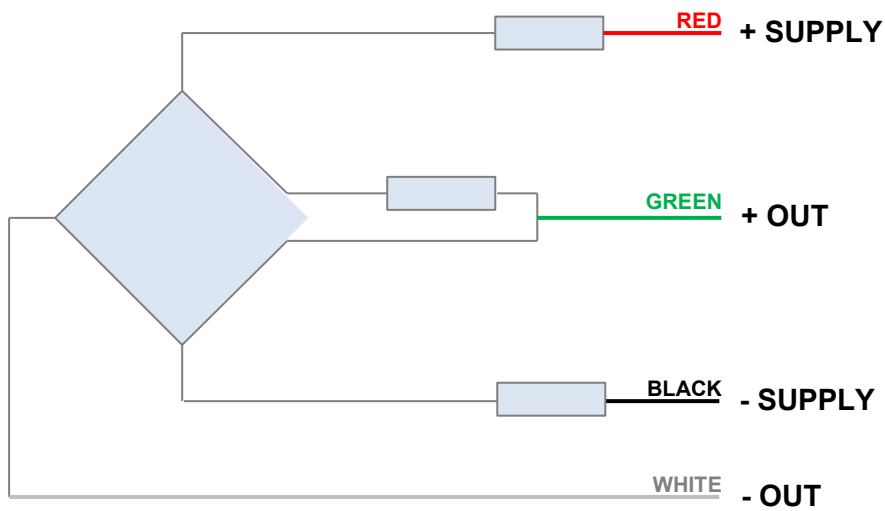
PARAMETERS	VALUES	NOTES
Supply voltage	5 Vdc	10 Vdc in option
Pressure type	Absolute, Sealed, Relative (relative up to 35 bar / 500 psi)	
Repeatability	± 0.25% of FS	
Operating temperature	-40°C to +120°C	
Compensated temperature	20° to +80°C	Others in option
Thermal Sensitivity Shift	< ± 2% / 60°C	
Zero offset at 20°C	± 10 mV	
Insulation	> 100 MΩ / 50V	
Impedance in	1200 Ω nom	
Impedance out	350 Ω nom	

Material	Stainless Steel	
Output	Cable 24" standard	Other length in option
Options	Consult technician	
Sealing	VITON O'ring 3.68x1.78 80 shore A	

SIZE

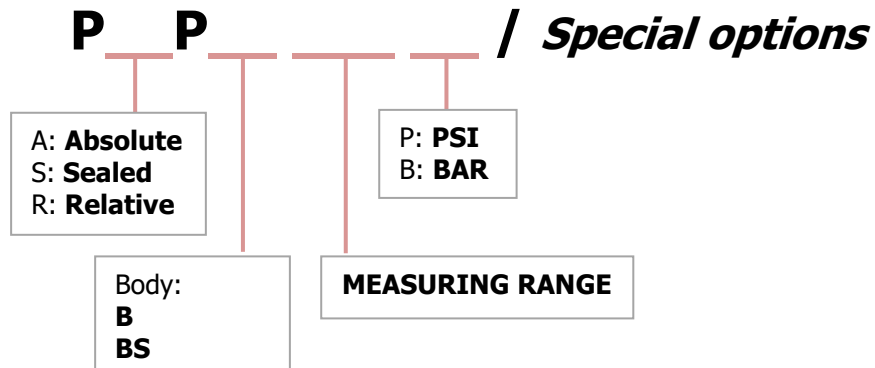


WIRING



Note: For **P-PBS** thermal compensation is made with an external module

ORDERING INFORMATION



• Special options

OPTION		FEATURES
Cable Length	None	24" (0.61m) standard for P-PB 39" (1m) standard for P-PBS
	LXXM	XX = Length in meter (M)
	LXXF	XX = Length in feet (F)
Supply voltage	None	5 Vdc (standard)
	10V	10 Vdc
Compensated temperature	None	20°C to 80°C (standard)
	C1	-40°C to 20°C

Example:

PAPB1KP

- Absolute
- Body B
- 1000 PSI
- 24" cable output
- Supply voltage: 5V
- Output: 68.75 mV ± 8 mV
- Compensated temperature: 20°C to 80°C

PAPB50P/L05M10VC1

- Absolute
- Body B
- 50 PSI
- 5 meters cable output
- Supply voltage: 10V
- Output: 120 mV ± 16 mV
- Compensated temperature: -40°C to 20°C

CONTACT

MESUREX

13 Rue des Corroyés
78730 Saint Arnoult en Yvelines (France)

Tel : +33 (0) 1 30 41 23 62

Mail : mesurex@mesurex.fr

Web : www.mesurex.fr