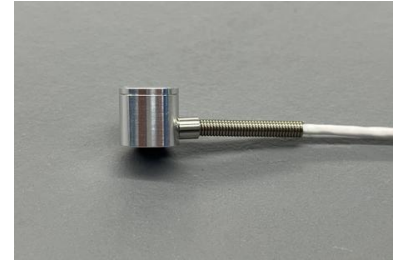


FC200R Series

Miniature Compression Load Cell

Ref : 4216

Rev : A



DESCRIPTION

The FC200R family is a miniature compression load cell that can be used in static and dynamic application. It incorporate a spherical load button for more precise measurements. The sensing element is a fully temperature compensated wheatstone bridge. A strain relief spring protect and strengthens the cable output. Options are available on temperature compensation and cable length.

TECHNICAL DATA

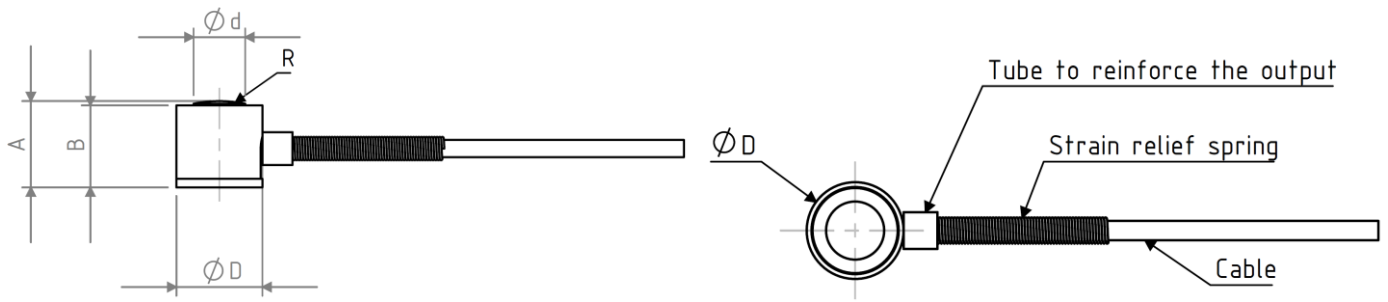
PARAMETERS	Values													
	Measuring range (FSO)	N	2N	5N	10N	20N	50N	100N	200N	500N	1kN	2kN	5kN	10kN
Material		Aluminum					Stainless Steel			Aluminum		Stainless Steel		
Overload without damage		2 x FS												
Overload without destruction		3 x FS												
OUTPUT		150 mV					120 mV			60 mV		120 mV		
Full Scale Output (FSO) @ 10 VDC														
Output Impedance		500 Ω												
Zero offset		± 10 mV												
Linearity		< ±0.5% FS												
Hysteresis		< ±0.5% FS												
Insulation		> 100 MΩ @ 50 VDC												
ENVIRONMENTAL														
Operating Temperature Range (OTR)		-40°C to +120°C												
Compensated Temperature Range		0°C to +60°C (See Options for other ranges)												
Thermal Zero Shift within CTR		< 2% FS / 50 °C												
Thermal Sensitivity Shift within CTR		< 2% of reading / 50 °C												
PHYSICAL														
Mechanical Connection														
Electrical connection		4 wires shielded cable, standard length 2m (customizable length in option)												
Index of Protection		IP50												

Notes :

Typical values at +23°C

Signal goes negative in compression with standard wiring configuration

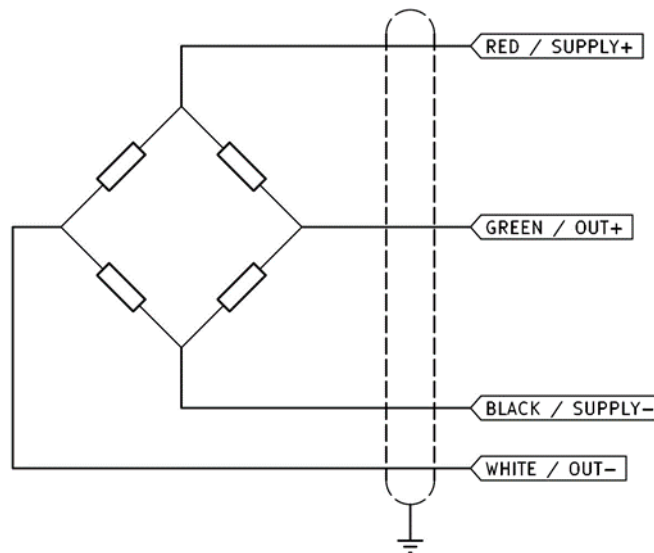
SIZE



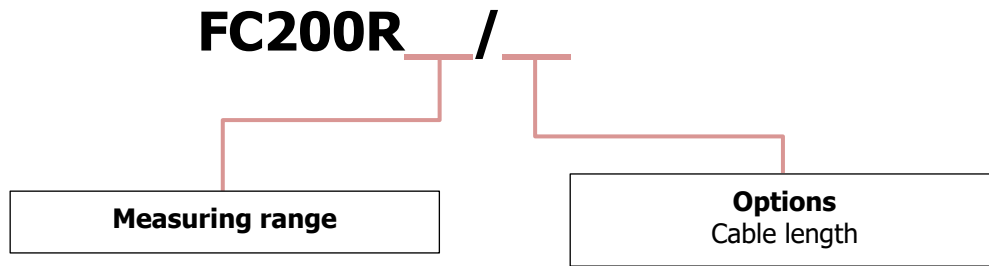
Dimensions in mm

Ranges	2N, 5N	10N, 20N, 50N	100N, 200N	500N, 1kN	2kN	5kN, 10kN
A	10					16
B	9,5					15
Diameter D	10					16
Diameter d	3	5		6		12
R	15					30
Tube presence	NO			YES		

WIRING



ORDERING INFORMATION



Options	Reference	Description
Compensated temperature range	None	0°C to +60°C (standard)
	C1	0°C to +120°C
	C2	-40°C to +120°C
Cable length	None	2m (standard length)
	LxxM	xx : custom length in meter
	LxxF	xx : custom length in foot

Examples:

FC200R-5N

- Measuring range: 5N
- Cable length: 1m (standard)
- 0°C to +60°C compensated temperature

FC200R-200N/L20F-C2

- Measuring range: 200 N
- Cable length: 20 foot
- -40°C to +120°C compensated temperature

REVISIONS HISTORY

REVISION	DATE	DESCRIPTION
A	18/03/2025	Document creation (DRAFT)
B	24/07/2025	Technical data update

CONTACT

MESUREX

13 Rue des Corroyés
78730 Saint Arnoult en Yvelines (France)

Tel : +33 (0) 1 30 41 23 62

Mail : mesurex@mesurex.fr

Web : www.mesurex.fr